

SSMMAATTERINGS

Spring 2008

SSMMA Officers

Dan Podgorski, President
 Al McCowan, Vice President
 Terry Wells, Secretary
 JoAnn Kelly, Treasurer
 Gene Williams, Cook County
 At-Large Representative
 Mike Einhorn, Will County
 At-Large Representative

SSMMA Staff

Ed Paesel, Executive Director
 Bud Fleming,
 Deputy Executive Director
 Rita Kueny, Office Manager
 Reggie Greenwood,
 Director of Economic Development
 Eileen Santschi,
 Accounting Manager
 Sheila Miller,
 Administrative Assistant

Emerald Ash Borer

During the month of January, South Suburban Mayors and Managers Association was notified by Ms. Edith Makra of the Morton Arboretum, that through results of traps set in various areas, the Emerald Ash Borer had come to the South Suburbs. Traps in Hazel Crest, Country Club Hills and other areas had shown positive for this insect.

In an effort to provide advance warnings and illustrate how to detect the presence of this creature, a field visit to Hazel Crest was held to show how to identify the presence of the Emerald Ash Borer, followed by a workshop at the offices of SSMMA on January 23rd. Earlier in the week, on Monday the 21st, Senator Dick Durbin visited the site in Hazel Crest and renewed his support to try to bring financial and other types of aid to areas that become infected with this pest.

The workshop was attended by several Mayors, Managers, Public Works Directors / Supervisors and Arborists from the surrounding communities. Attending the workshop were Kambium Buckner U.S. Senate Aide to Senator Durbin, Edith Makra Community Trees Advocate @ Morton Arboretum, Jim Tresouthick Homewood Village Forester, Mark Cinnamon and Paul Deizman from Illinois Dept. of Agriculture, Ed Kalebich COO of Robbins Community Power and Thomas Dilley U.S. Forest Service.

Each gave a presentation explaining the devastating effects of this insect and discussed the possible options to consider when addressing the disposal of the insect so that the surrounding trees and greenery are not lost. This summer will most likely bring new discoveries and the need for regional planning to address the problem will be critical.

The expertise of those who came out to discuss this problem with us is available as well as the expert knowledge of our foresters and arborists. Using all of these resources will provide a solid foundation to address this issue.



Inside this issue:

<i>Safe Routes to School</i>	2
<i>Transportation News</i>	2
<i>Public Works Advisory Comm.</i>	3
<i>E-Waste & HHW Disposal</i>	3
<i>Legislative Policy Statement</i>	3
<i>IEPA Household Hazardous Waste Collections</i>	4
<i>SSMMA/IFA Volume Cap Pool / SSMMA Retreat</i>	5
<i>Springfield Legislative Trip</i>	5
<i>Chicago Southland Economic Development Corporation</i>	6
<i>Broadband Study Update</i>	7
<i>Save The Date</i>	7
<i>Important Dates</i>	8

Auction

Last October a very successful auction was held by SSMMA at Dyer Auto Auction. From that success we have been asked to inquire about another auction in late April or early May.



A notice and survey has been sent to all members asking for their response to participation in an auction at this time and if so, what do they have to include in the auction.



Transportation News

Southland Safe Routes to School



The Southland Safe Routes to School program has completed Phase One of the program in which seven schools received travel plans. A travel plan involves evaluating the walking and biking environment around the school, and giving the schools recommendations for improving their communities walk and bike ability.



Phase Two has begun. In Phase Two, Crete, Lansing, Dolton, and Midlothian schools will receive the infrastructure improvements listed in their travel plans, and begin programming at the schools.

Preliminary engineering for infrastructure projects will begin in Spring 2008. Construction is planned to start in the Summer 2008 when students are on vacation and construction will not prohibit them from walking and biking to school.

Pedestrian and bicycle education for all students attending the Phase Two schools, and encouragement programs such as walking school buses, bike trains, and frequent walker cards are being planned and have begun in some locations. Student patrols will be trained over the winter months, and will be ready to assist walking and biking students in the spring.

The Southland Safe Routes to School Coordinator is available to assist in any South Suburban Communities Safe Routes to School efforts. If you need help or would like more information about Safe Routes to School, please contact Leslie Phemister at 708-922-4673 or e-mail her at leslie@biketraffic.org

Transportation Committee News

SSMMA's Transportation Committee, chaired by Mayor Mark Stricker of Matteson, issued a call for projects last fall. Many project proposals were received and following review by the Transportation Advisory Group, the Transportation Committee approved a revised project funding list for the next several years.

Included in this year's program is the Emergency Vehicle Preemption Program being coordinated by Robinson Engineering through the City of Calumet City. Seventeen communities and 120 intersection locations have been approved for inclusion. The State will seek project bids in April and we anticipate actual construction this summer on this very important safety program.



In addition, the Committee approved funding for this year for several Local Agency Pavement Preservation Projects (resurfacing). Communities scheduled to receive projects this year include Steger, Hazel Crest, Calumet City, Calumet Park, Chicago Heights, Homewood, Lansing and Riverdale. These projects should also be under construction later this year.

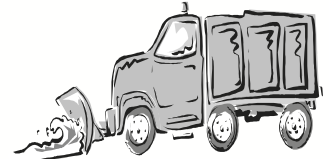
Furthermore, two other large projects will be under construction this year. South Holland's State Street at 168th Street intersection, as well as Tinley Park's 183rd Street project from 80th Avenue to LaGrange Road were included.

The Committee also agreed to provide funding to Harvey to assist them in relocating a water main being impacted by the State's project of reconstructing 159th Street between I-294 and Illinois Rt. 1, which should be under construction as well this year.

In total, the Transportation Committee has programmed \$12.8 million towards projects in nearly 25 of our communities this year and an additional \$5.7 million next year.



PUBLIC WORKS ADVISORY COMMITTEE



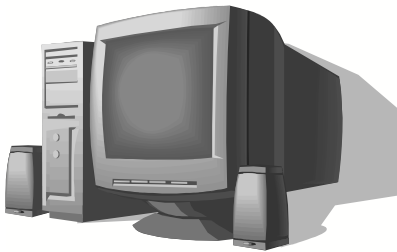
The Public Works Committee had a breakfast meeting on Thursday, February 28, 2008 at The Egg & I Restaurant. Activities of the past few months provided much to discuss as well as the ongoing issues that face Public Works Departments. The next Public Works Committee meeting will be March 27, 2008 at the Hazel Crest Village Hall at 9:30 a.m.

SALT

Due to numerous telephone calls asking for assistance to locate a source of salt for the streets, a meeting was held with most of our municipalities to determine what could be done. Thanks to the combined input of many of our Public Works Directors/Supervisors, several leads were obtained; additionally phone calls and e-mails from outside sources were forwarded for consideration.

John Schaefer, Director of Homewood Public Works and Chairman of the Public Works Committee, took the information, determined which was most affordable and viable vendor and negotiated on behalf of all of the municipalities. Many thanks to John for his assistance with this vital public safety issue.

E-WASTE & HOUSEHOLD HAZARDOUS WASTE DISPOSAL



Recently a number of communities in SSMMA and the Metropolitan Mayors Caucus have taken or are about to take action to adopt a Greenest Region Compact. The Executive Committee of the SSMMA has considered the possibility of providing an e-waste and hazardous waste drop off day in the Association membership area.

A member survey has been sent to all municipalities requesting the level of interest they would have regarding participation in this activity. There are six (6) questions on the survey and everyone was asked to return their responses to the Association. The results of this survey will be compiled and reported back to the Executive Board to determine the next steps.

2008 LEGISLATIVE POLICY STATEMENT

Under the leadership of Legislative Committee Chairman Mayor Tom Murawski, the Association adopted our annual Legislative Policy Statement on February 21, 2008. This statement will be used as SSMMA's policy position on many state, federal and county issues.

A change this year resulting from the Strategic Planning Retreat held in January will be the development of two or three main priorities that will be determined by surveying the membership.

SSMMA President Dan Podgorski led the SSMMA Strategic Planning Retreat attended by approximately 25 Mayors and Village Managers and facilitated by Metropolitan Mayors Caucus Executive Director Dave Bennett.

One of the key outcomes of the retreat was to try to be more focused in our legislative outreach programs to improve the effectiveness of our outreach efforts with the Legislature and the Governor, as well as our federal representatives.





Illinois Environmental
Protection Agency

SPRING 2008 HOUSEHOLD HAZARDOUS WASTE COLLECTIONS

DATE	LOCATION	ADDRESS	COSPONSOR(S)
4/19/08	Chicago Cook County	<u>DeVry Technical Institute</u> <u>3300 North Campbell</u>	Chicago Department of Environment
4/19/08	Cairo White County	<u>Maintenance Yard</u> <u>105 6th Street</u>	City of Cairo
4/26/08	Mendota LaSalle County	<u>City Parking Lot</u> <u>1100 Meriden Street</u>	City of Mendota
5/3/08	Peoria Peoria County	<u>Exposition Gardens</u> <u>1601 W. Northmoor Road</u>	City of Peoria, County of Peoria Recycling and Resource Conservation
5/3/08	Elmhurst DuPage County	<u>Public Works Facility</u> <u>985 S. Riverside Drive</u>	City of Elmhurst, DuPage County
5/17/08	St. Charles Kane County	<u>Kane County Fairgrounds</u> <u>(Enter on Oak Street west of Ran-</u> <u>dall Road)</u>	Kane County Dept. of Environment
5/31/08	Chicago Heights Cook County	<u>Parking Lot</u> <u>1020 Dixie Highway</u>	City of Chicago Heights
6/7/08	Old Valmeyer Monroe County	Parking Lot Lake Road and Route 156	Monroe-Randolph Bi-County Health Department, Valmeyer High School Science Club
6/21/08	Palatine Cook County	TBA	Metropolitan Water Reclamation District of Greater Chicago

ONE DAY COLLECTIONS ARE OPEN FROM 8 AM TO 3 PM ON THE ABOVE SCHEDULED SATURDAYS

In addition, the following long-term facilities are available for disposal of HHW. Please phone ahead to determine availability and open hours.

Naperville: 1971 Brookdale Rd.
Fire Station #4
For Information:
630/420-4190 (Phone)

Rockford: 3333 Kishwaukee
Rock River Reclamation District
For Information:
815/987-5570 (Phone)

City of Chicago: Household Chemicals and Computer Recycling Facility
1150 N. North Branch on Goose Island
For more info: [City of Chicago](#)
Phone: 311 or for general info:
312-744-7672

Lake County: The Solid Waste Agency of Lake County (SWALCO) currently operates a long-term household chemical waste collection program. Information and a collection schedule can be found on the [SWALCO](#) Web site, or by calling 847/336-9340.

For questions concerning the IEPA's one-day or long-term collections, please call the Waste Reduction Unit at (217) 785-8604.



South Suburban Mayors and Managers Association(SSMMA)/Illinois Finance Authority(IFA) Volume Cap Pool



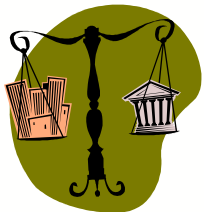
Attention home-rule communities! The goal of the SSMMA/IFA Volume Cap Pool is to keep any unused Industrial Revenue Bond (IRB) allocation in the southern suburbs in order to foster economic development in the region. For 2008 the total amount of Volume Cap available for use for Industrial Revenue Bonds to our members is \$37,681,265.

2007 was the most successful year for IRB activity in the SSMMA service area (and overall at IFA) since 2000. Additionally, for the first time since 2001, IFA was able to use 100% of SSMMA's allocation for the primary purpose – helping to finance expansion of the region's economic base by financing manufacturing projects and thereby creating and retaining value-added jobs. These 2007 results reflect the liberalization of a spending limit on IRB financed projects in the Internal Revenue Code that had not been adjusted for inflation since 1979. Since 2001 approximately 90% of IFA's manufacturing prospects had been disqualified as a result of the pre-2007 law. The new IRB spending limit as of January 1, 2007 has resulted in projects as large as \$15 - \$18 million obtaining IRB financing for up to \$10 million of total project cost. The IFA anticipates similar IRB activity in 2008.

As noted earlier, there was a lack of demand for Volume Cap beginning in 2001. As a result IFA began allocating unused Volume Cap as "Carryforward Volume Cap". Per IRS regulations, Carryforward Volume Cap may be used for up to three additional calendar years to issue Affordable Rental Housing Bonds. Potential projects for this designated purpose include multifamily and senior affordable housing developments. Currently the pool still has \$16.8 million in 2005-2006 Carryforward Volume Cap that is available for use with Affordable Rental Housing Bonds.

If you are a home-rule community please consider ceding your unused volume cap for 2008 to our pool. The more unused volume cap we have ceded to the pool, the better the chances we have of attracting some substantial investors. Ideally, we would like to use the 2008 pool to finance qualified industrial projects within our region before the end of the year. If we are unable to produce any viable projects we will once again carry the pool forward. Information on how to go about ceding to the pool will be mailed out in early March. The deadline to cede is April 30, 2008. In the meantime, if you have any questions regarding the Volume Cap Pool, Industrial Revenue Bonds or Affordable Rental Housing Bonds, or know of potential qualifying projects, please contact Eileen Santschi at (708) 922-4676.

Annual Springfield Legislative Trip



This year's annual SSMMA Legislative Trip to Springfield, in conjunction with the Illinois Municipal League, will be held on April 9, 2008. We use this trip to educate our legislators, as well as representatives of the Governor's office and various state agencies, of our legislative priorities.

We encourage all communities to participate. Information has previously been sent to all Mayors and Village Managers, but to obtain additional information please contact Ed Paesel at (708) 206-1155.

Retreat

The SSMMA Retreat took place on Saturday, January 26 and was attended by twenty-one (21) Mayors and Managers representing eighteen (18) communities. A report is being completed that will be presented to the Executive Committee at their March 6th meeting with the recommendations that were made at the retreat. The results will then be shared with the entire membership at the March 13th Dinner meeting.



2008 CSEDC Committees and Work Program

Business Cluster Studies
Economic Development Strategy
Energy, Environment & Design
I-80 East Logistics Corridor
Marketing Southland Development Opportunities
Regional Broadband Connectivity Centers
Regional Retail/Office Development
Renewable Energy Development/Biofuels
Support Major Infrastructure Projects
TOD Corridor
Tourism/Sports Development
Calumet River Corridor

Following is a description of our proposed work in Regional Broadband Connectivity Centers.

Broadband connectivity has been identified as a significant component directly impacting the selection of industrial manufacturing, assembly or warehouse sites by business and industry. In some site selection activity, business and industry places broadband connectivity at the same level of criticality as road access, commercial power or other utility consideration.

The incumbent service providers, AT&T and Comcast, provide broad service and coverage information for most areas within SSMMA, and AT&T has begun marketing their "Smart Moves" connectivity services for some industrial park areas. There are other areas that currently do not have lower cost DSL or cable modem services available to them. Distances for build out for either AT&T and Comcast services has increased the cost for access to broadband connectivity and has slowed site selection processes by business and industry. This has also limited the ability of economic development groups to solicit for new connectivity reliant businesses across an area or region by not having consistent broadband capabilities and costs for high-speed data services.

One approach to addressing the need for bandwidth for economic development would be for SSMMA to facilitate a connectivity point within major development areas that would offer high bandwidth with known costs and capabilities. The connectivity center or Regional Broadband Connectivity Center (RBCC) could be co-located in an industrial park facility or a separate facility could be constructed. The key requirement for the RBCC facility is the ease of access by surrounding facilities for fiber or wireless connectivity.

The RBCC would require fiber backbone connectivity for high bandwidth capacity to the Internet or for interconnect with other development areas. And, as the concept is developed, providing fiber connectivity to other regional centers to interconnect businesses with high capacity point-to-point links will strengthen the level of service offered. Businesses and property managers would have a fixed point for broadband access within that development with known costs and capabilities.

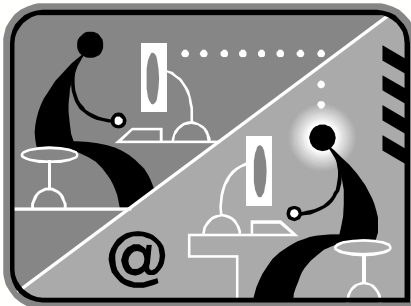
A single provider can provide initial services for the RBCC. But, as the concept is developed, additional service providers can be added to a site creating a regional co-location center for connectivity. For example, if AT&T provided high capacity interconnect to a RBCC, as that capacity is used or businesses are added for which connectivity is critical, additional service providers such as New Edge, Level 3 or Sprint could provide additional high capacity links into the center. This provides the connected business or

industry with alternate routing in the event of a fiber cut or equipment failure from any single service provider and offers greatly enhanced reliability.

An example of a centralized broadband deployment is the DuPage County Industrial Park. DuPage County is developing an industrial park in an area between Geneva and West Chicago. A key component to the property is a connectivity center providing both high speed data connectivity and traditional telephone services. Initial tenants of the telecommunications locations is Equinix, a high capacity data service provider, AT&T with both data and phone services and NIU-net providing connectivity for municipal services and ICN access for local communities and connectivity for the Proton Accelerator that is part of the park development.

Please email Reggie Greenwood at reggie.greenwood@ssmma.org to discuss broadband connectivity centers or any other CSEDC economic development projects.

Broadband Connectivity Study Update



Late last summer the Association undertook a far reaching two-year effort, in cooperation with Northern Illinois University Regional Development Institute, to develop a business plan that will ultimately build a regional network to enhance municipal and other government services and to provide an economic development resource for private sector partners. The Department of Commerce and Economic Opportunity has provided initial funding of \$50,000 for the project.

The first group of communities that feed into Rich Township High School District #227 and those feeding into High School District #230 have nearly been completed and an initial draft report will be issued shortly.

The second group of communities, those that feed into Thornton High School District #205 and those part of Homewood-Flossmoor District #233 are now underway. We anticipate that the analysis of these communities will continue through June of this year and then another series of communities will follow.

To date, the initial analysis has shown that a broad range of municipal needs exist including interconnect of facilities, traffic enforcement and red light cameras, e-government requirements, public safety connectivity and some public safety video surveillance needs.

The Technology Committee consisting of Village Managers Bridget Wachtel of Flossmoor, Tom Mick of Park Forest and Mark Franz of Homewood, will continue to work with N.I.U. and the communities as the process develops.

SAVE THE DATE

**SOUTH SUBURBAN MAYORS AND MANAGERS
ASSOCIATION**

**29TH ANNUAL GOLF OUTING
FRIDAY, JULY 18, 2008**

**LINCOLNSHIRE COUNTRY CLUB
CRETE, ILLINOIS**



Important Dates

March 13	SSMMA Dinner Meeting (Scrementi's Restaurant, 3760 Chicago Road, Steger, IL) - Associate Member Appreciation Dinner
March 18	Diversity, Inc. Monthly Meeting (Association Offices)
March 27	Public Works Advisory Committee (Hazel Crest Village Hall)
APRIL	Fair Housing Month
April 1	Transportation Committee Meeting (Matteson Village Hall)
April 17	SSMMA Business Meeting (Association Offices)
April 24	Public Works Advisory Committee (Hazel Crest Village Hall)
May 6	Transportation Committee Meeting (Matteson Village Hall)
May 20	Diversity, Inc. Monthly Meeting (Association Offices)
May 15	SSMMA Dinner Meeting (TBD) Election of 2008-09 Officers
May 22	Public Works Advisory Committee (Hazel Crest Village Hall)
May 31	Household Hazardous Waste Collection (1020 Dixie Highway, Chicago Heights)
June 3	Transportation Committee Meeting & Golf Outing (TBD)
June 19	SSMMA Business Meeting (Association Offices)
June 26	Public Works Advisory Committee (Hazel Crest Village Hall)

For more information on these events please contact
SSMMA at 708-206-1155 or info@ssmma.org

SSMMATTERINGS Editor: Rita Kueny

Printed on recycled paper

Think Spring!



Non-Profit Organization
U.S. Postage Paid
Permit #185
Homewood, IL 60430

South Suburban Mayors & Managers Association
1904 W. 174th Street
East Hazel Crest, IL 60429